



WILGER

Better Engineered Sprayer Components for Over 45 Years

Revised Product

Electronic Flow Monitoring System
EFM JET Change

Bulletin Date: July 1, 2024
Bulletin Reference: 240701-01

WILGER EFM System JET Change

JET changed for simpler installation and removal

The patented EFM jets stabilizes the flowmeter reading over a wide range of operational flow ranges to mirror the vast requirements for fertilizer and chemical metering requirements in agriculture.

Type of Product Change: Running Part/Kit Change

This means the existing part numbers and kits will be rolled into using this new jet in inventory, and the older style jet will no longer be used.

Electronic Flowmeters & Jets

A clear flowmeter that connects to any ORS outlets, with an accurate flow range of 0.04 - 1.53 us gpm, using patented flow stabilizing jets.

20580-00 EFM KIT

Includes 4 sizes of EFM jet¹ with a snap-in strainer (#40250-00)



20580-06 Body Assembly EFM BODY ASSY (no jets, wire side showing)



Product	Description	Part#
Electronic Flowmeter Body [0.04-1.53 us gpm]	Flowmeter Assy Kit	20580-00
	Body Assembly (no jets)	20580-06
	Body Only (clear plastic)	20580-01
Replacement Jets (without 50 mesh snap-in strainer)	Green (up to 0.12 us gpm)	20581-01
	Red (0.1 - 0.31 us gpm)	20581-03
	Blue (0.18 to 0.98 us gpm)	20581-05
	Black (0.6 to 1.53 us gpm)	20581-07

IMPROVED EFM JET DESIGN
Easier removal & insertion
shipping in 2024

¹Jets now include a lip for easier insertion and removal without a strainer

Notice in catalog: Picture reference of this change is also available in the updated Catalogs (as of July 1, 2024)

NEW STYLE

IMPROVED EFM JET DESIGN
Easier removal & insertion
shipping in 2024



OLD STYLE



Older style jet required a strainer to aid insertion and removal of the jet (strainer included in kit)

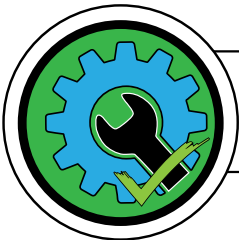


¹Jets now include a lip for easier insertion and removal without a strainer. Simply use a flat edge (e.g. flat screwdriver) between the flowmeter body and the lip.

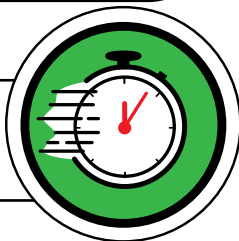


IMPORTANT! KIT CHANGE FOR 20580-00:

Since strainers are not required for each jet, a single 50 mesh strainer is now included in a kit, instead of 4.



Easier jet removal,
& less pieces to handle



Faster EFM kit
assembly

CANADA
Wilger Industries Ltd.
Site 412, Box 280, RR#4
Capital Circle W & Auction Mart Rd.
Saskatoon, SK, Canada S7K 3J7
Phone: 1 (833) 242-4121
Fax: (306) 242-4122
Email: info@wilger.net

@WilgerParts

UNITED STATES
Wilger Inc.
255 Seahorse Drive
Lexington, TN, USA
38351-6538
Phone: (877) 968-7695
Fax: (877) 968-7613
Email: WilgerEsc@WilgerEsc.com

@WilgerInc

ARGENTINA
Wilger Argentina
Mitre 699
San Nicolas (2900)
Buenos Aires, Argentina
Phone: +54 9 336 4596710
Email: cjpurras@gmail.com

**Focused on Application
Performance for
Over 45 Years**

www.wilger.net

All Wilger trademarks and logos are owned by Wilger Industries Ltd. All other brand or product names are trademarks or registered marks of their respective owners. All rights reserved.



Revised Product

Electronic Flow Monitoring System
EFM JET Change

Bulletin Date: July 1, 2024
Bulletin Reference: 240701-01

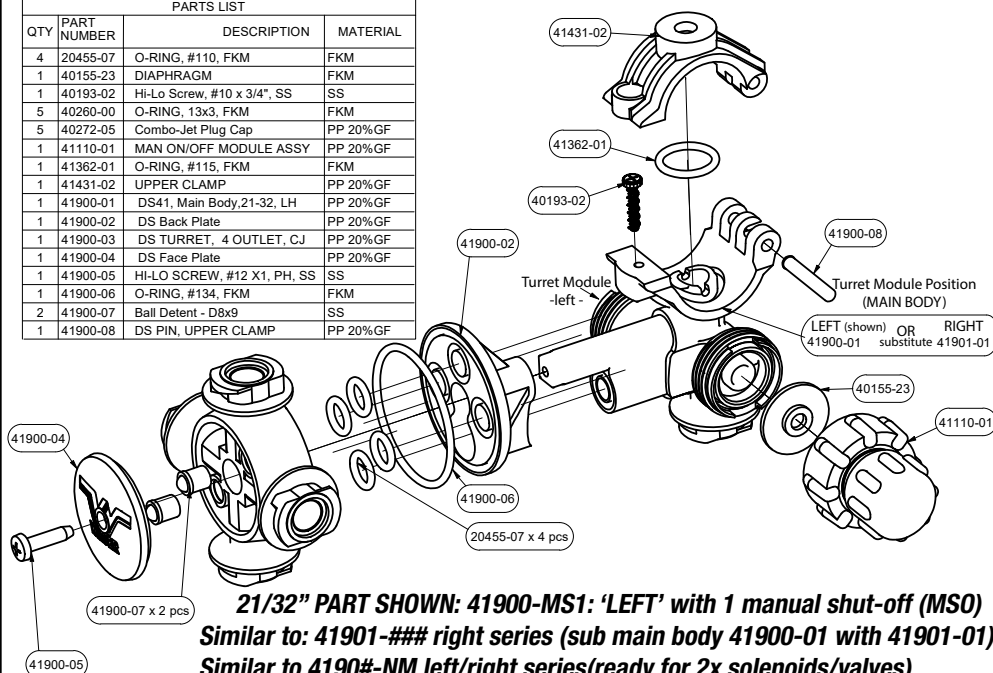
WILGER

Better Engineered Sprayer Components for Over 45 Years

WILGER Dual-Spray 4+1 ('DS41') Nozzle Body

Product Drawing: High Flow #41900-MS1

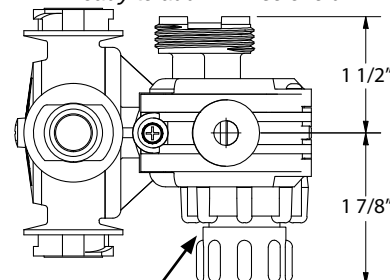
PARTS LIST			
QTY	PART NUMBER	DESCRIPTION	MATERIAL
4	20455-07	O-RING, #110, FKM	FKM
1	40155-23	DIAPHRAGM	FKM
1	40193-02	Hi-Lo Screw, #10 x 3/4", SS	SS
5	40260-00	O-RING, 13x3, FKM	FKM
5	40272-05	Combo-Jet Plug Cap	PP 20%GF
1	41110-01	MAN ON/OFF MODULE ASSY	PP 20%GF
1	41362-01	O-RING, #115, FKM	FKM
1	41431-02	UPPER CLAMP	PP 20%GF
1	41900-01	DS41, Main Body, 21-32, LH	PP 20%GF
1	41900-02	DS Back Plate	PP 20%GF
1	41900-03	DS TURRET, 4 OUTLET, CJ	PP 20%GF
1	41900-04	DS Face Plate	PP 20%GF
1	41900-05	HI-LO SCREW, #12 X1, PH, SS	SS
1	41900-06	O-RING, #134, FKM	FKM
2	41900-07	Ball Detent - D8x9	SS
1	41900-08	DS PIN, UPPER CLAMP	PP 20%GF



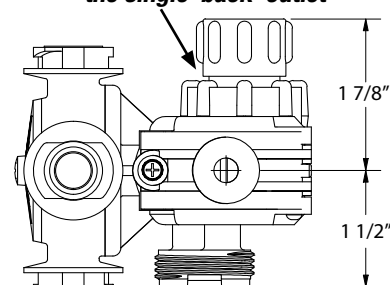
21/32" PART SHOWN: 41900-MS1: 'LEFT' with 1 manual shut-off (MSO)
Similar to: 41901-### right series (sub main body 41900-01 with 41901-01)
Similar to 4190#-NM left/right series (ready for 2x solenoids/valves)
Similar to 4190#-00 left/right (with two MSO knobs)

TOP VIEW

41900-MS1: 'LEFT' with MSO
Ready to add PWM solenoid



Manual Shut-off module controls the single 'back' outlet



41901-MS1: 'RIGHT' with MSO
Ready to add PWM solenoid

Compatible Check Valve or Control Module Options

Wilger has a variety of check valves or control modules that are compatible with this product.

Consult the module options for the desired function.

Manual ON/OFF Check Valve (MSO)

When 'ON', acts as a check valve.
 When 'OFF', shuts off flow.



Available in 4PSI, 10PSI, or 15PSI check valve strength

Diaphragm Check Valve

Standard check valve opens at a certain pressure.
 (10 PSI standard)



Available in 4PSI, 10PSI, or 15PSI check valve strength

Air-OFF Module

When sufficient air pressure is sent to check valve (+20PSI over liquid), module flow is closed.



Available in 4PSI, 10PSI, or 15PSI check valve strength

Alternate Valve or PWM Solenoid

No module is typically used when a PWM solenoid or electronic shut-off is used.*



A functional valve is required for operation

CANADA
 Wilger Industries Ltd.
 Site 412, Box 280, RR#4
 Capital Circle W & Auction Mart Rd.
 Saskatoon, SK, Canada S7K 3J7
 Phone: 1 (833) 242-4121
 Fax: (306) 242-4122
 Email: info@wilger.net

[@WilgerParts](https://www.wilger.net)

UNITED STATES
 Wilger Inc.
 255 Seahorse Drive
 Lexington, TN, USA
 38351-6538
 Phone: (877) 968-7695
 Fax: (877) 968-7613
 Email: WilgerEsc@WilgerEsc.com

[@WilgerInc](https://www.wilger.net)

ARGENTINA
 Wilger Argentina
 Mitre 699
 San Nicolas (2900)
 Buenos Aires, Argentina
 Phone: +54 9 336 4596710
 Email: cjparras@gmail.com

**Focused on Application
 Performance for
 Over 45 Years**
www.wilger.net

All Wilger trademarks and logos are owned by Wilger Industries Ltd. All other brand or product names are trademarks or registered marks of their respective owners. All rights reserved.